



636

ELLIS  
STREET

MOUNTAIN VIEW

---

14,612 sf

**CHASE LYMAN**  
650.400.5700  
clyman@sobrato.com

The  
**SOBRATO**  
Organization





636

ELLIS  
STREET

MOUNTAIN VIEW

TWO STORY STEEL CONSTRUCTION

55 PARKING SPACES

NEW PAINT AND CARPET

WRAP-AROUND GLASSLINE  
(FLOOR TO CEILING)

SHOWERS ON FIRST FLOOR

GREAT ACCESS TO 101, 85 & 237

LOCATED ON CORNER WITH  
HIGH VISIBILITY

ACROSS THE STREET FROM PEET'S  
AND SPECIALTY'S

5 MIN WALK TO THE VTA LIGHT  
RAIL STATION

BUILDING SIGNAGE AVAILABLE

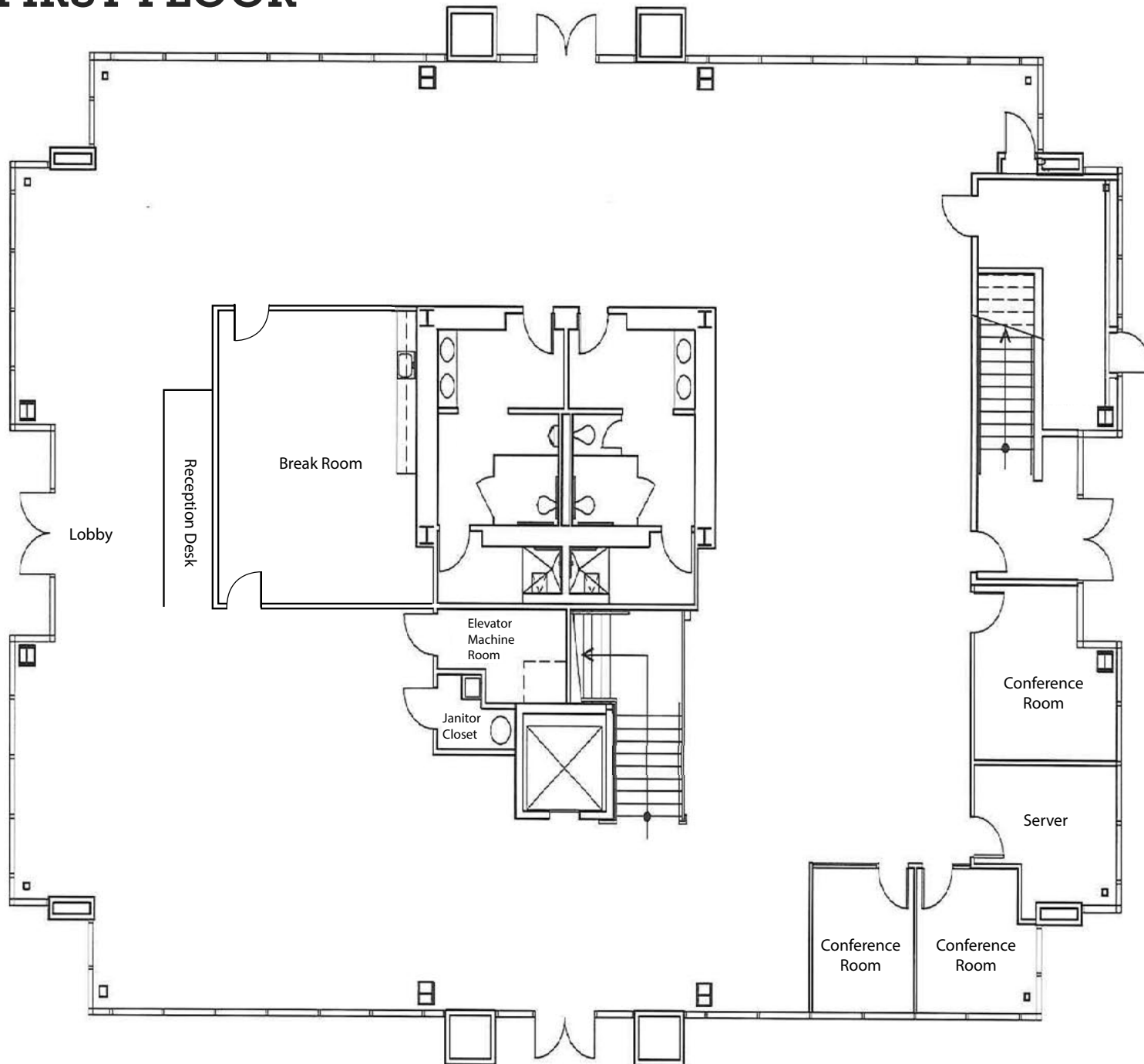
10' DROPPED CEILINGS

AVAILABLE 12/1/2023

FLEXIBLE TERM

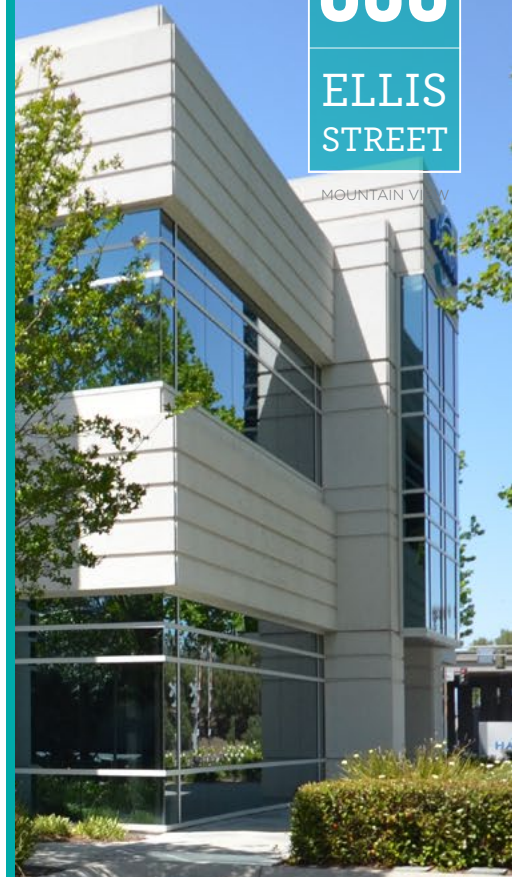


# FIRST FLOOR



636

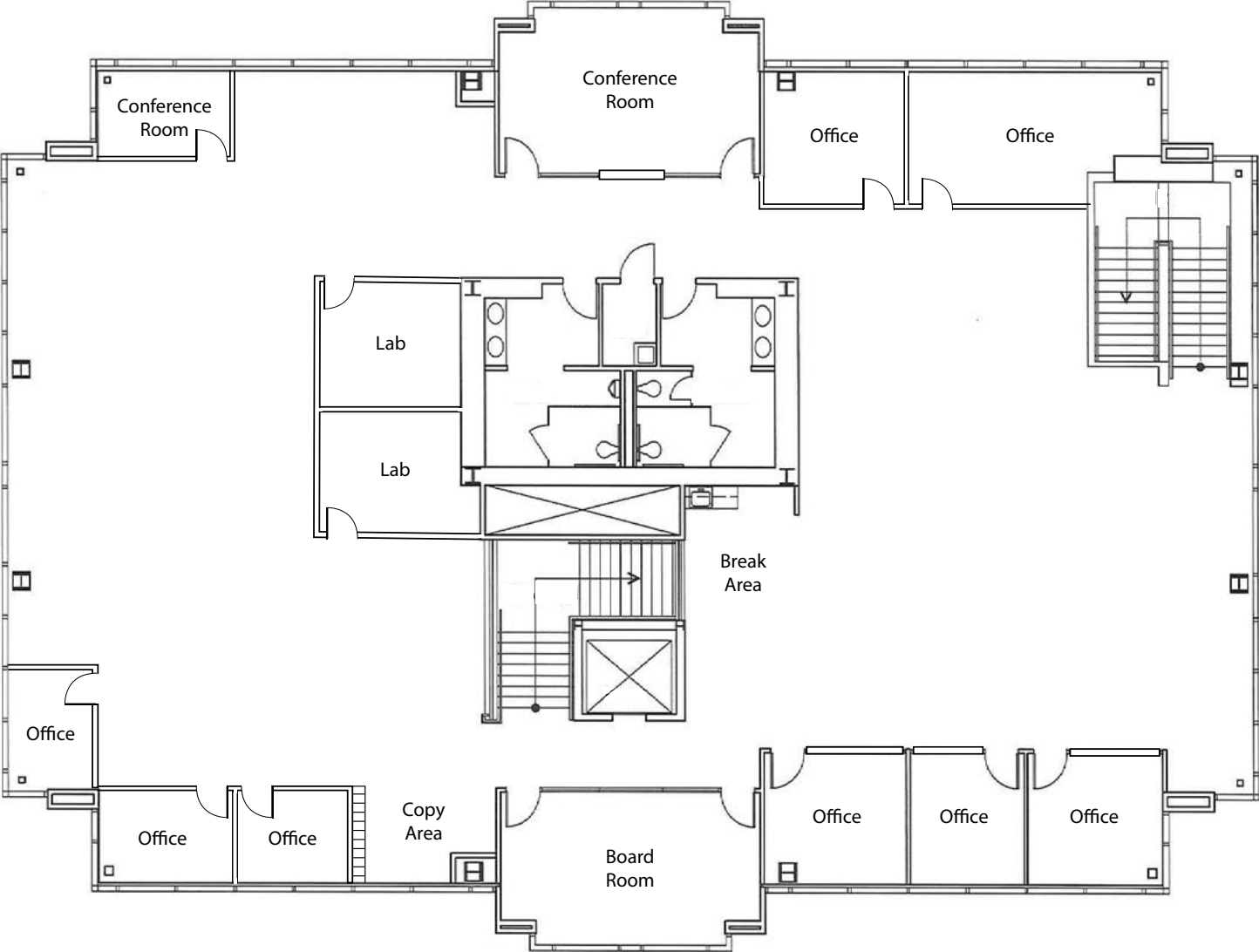
ELLIS  
STREET



**CHASE LYMAN**  
650.400.5700  
clyman@sobrato.com  
CA RE License #00902221

The  
**SOBRATO**  
Organization

# SECOND FLOOR



636

ELLIS STREET

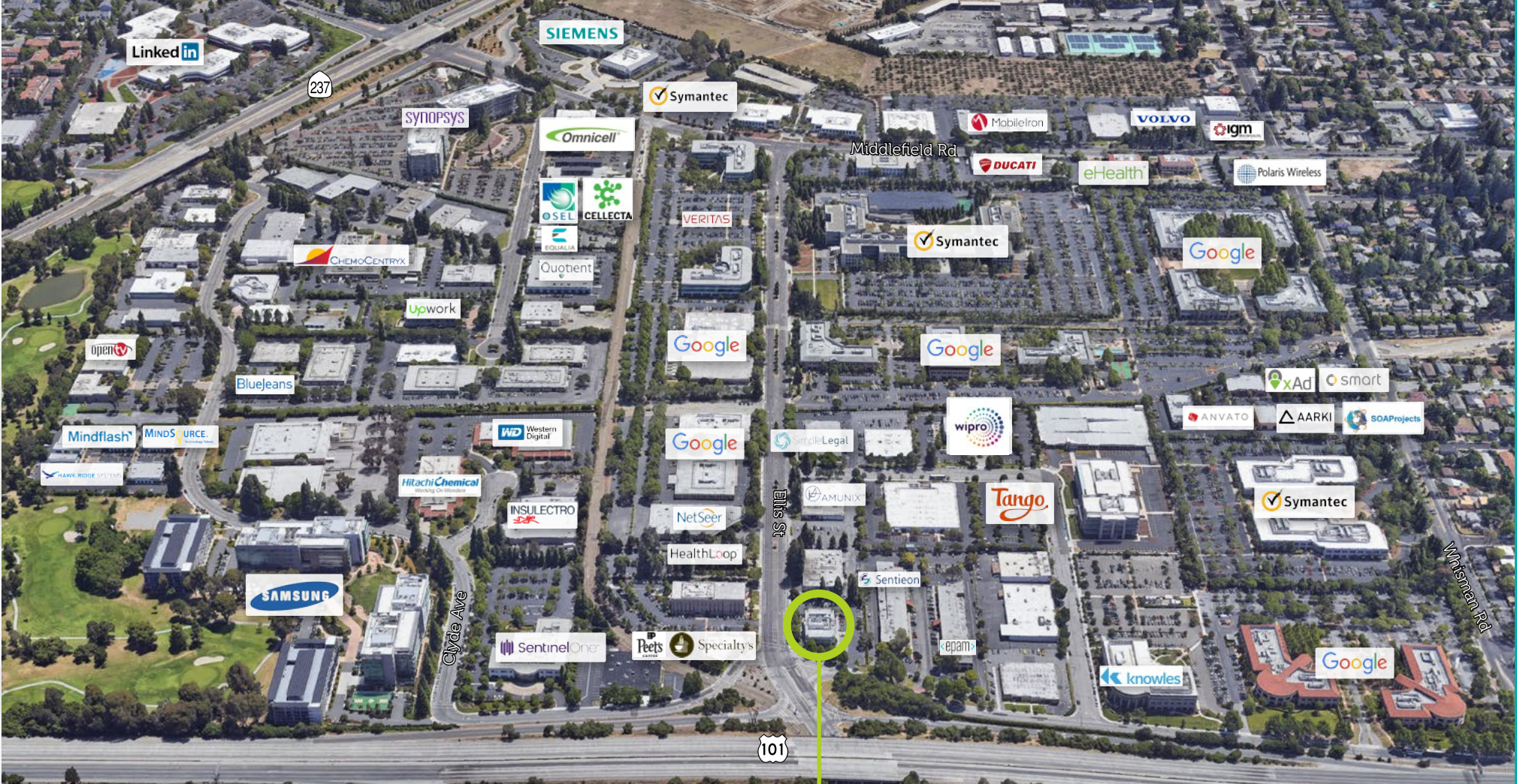


**CHASE LYMAN**  
650.400.5700  
clyman@sobrato.com  
CA RE License #00902221

The **SOBRATO** Organization



# PROXIMITY AERIAL



**636**  
**ELLIS**  
**STREET**  
MOUNTAIN VIEW

**CHASE LYMAN**  
650.400.5700  
clyman@sobrato.com  
CA RE License #00902221

The  
**SOBRATO**  
Organization